






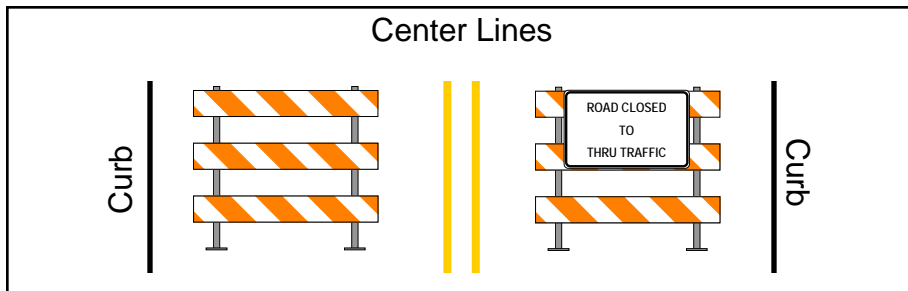


DEVICES THIS PAGE
Type Ills: 16 Signs: 5 Cones: 16 Volunteers: 2

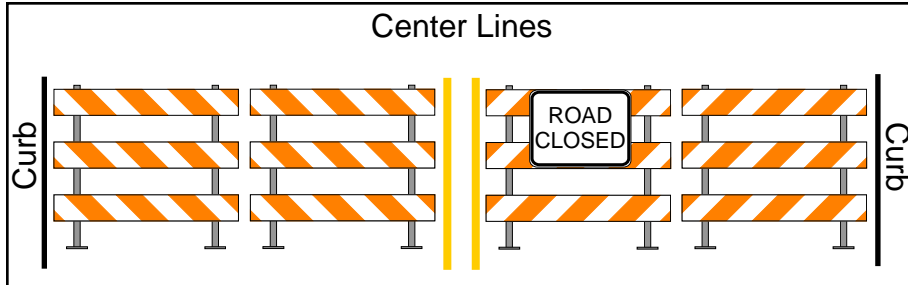
 Type III Barricades  
(# of Barricades)

 Turn Bay Closure  
(See sheet 7 for detail)

-  Traffic Control Volunteers
-  Route
-  Alley/ Entrance Driveway

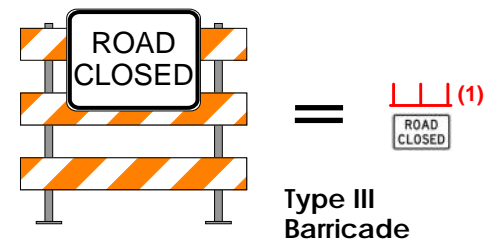
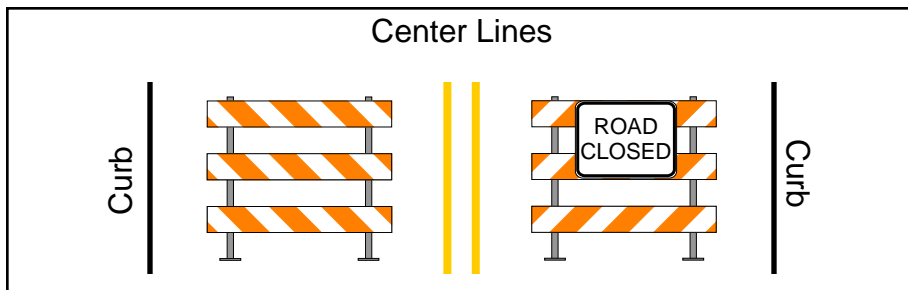


Place these first, like so, facing oncoming traffic.



Then pull closures into place, facing oncoming traffic.

Note: A sufficient number of barricades shall be installed to fully close the roadway from curb to curb.



Each Barricades requires at least 2 sand bags

Fire lanes to be maintained in accordance with Fire Department recommendations

#### Total Devices

Barricades: 16  
Signs: 5  
Cones: 16  
Volunteers: 2  
Vests: 2

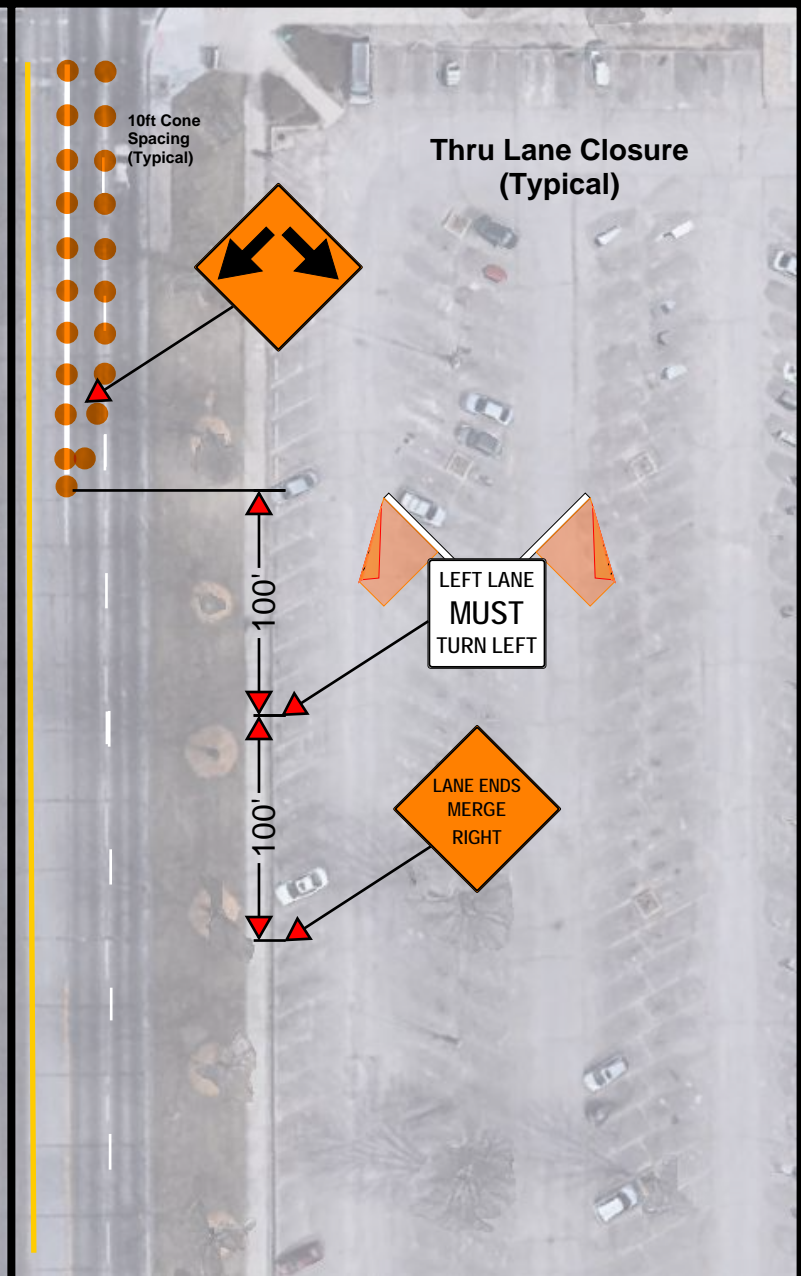
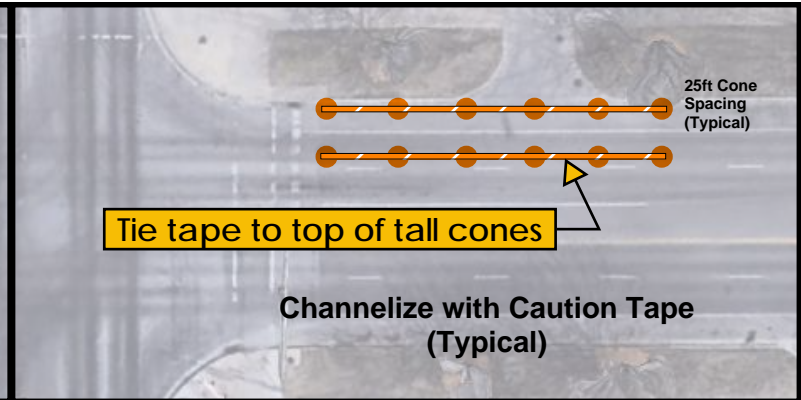
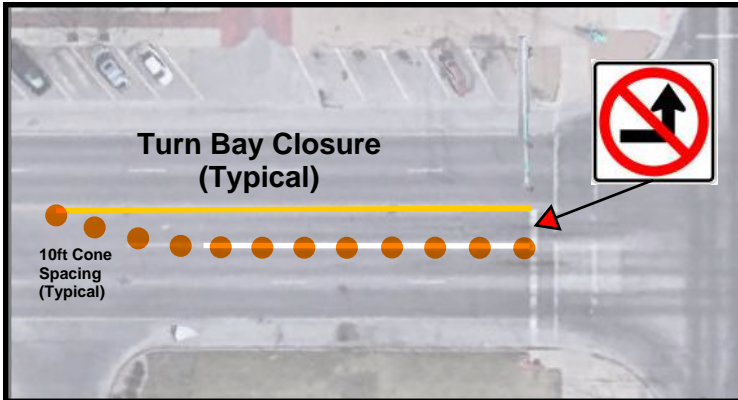
#### Traffic Control Company Contact Numbers:

C-HAWKK – 1-785-542-1800  
MATHER – 1-785-478-3780  
TCS – 1-785-448-0402  
CTCR – 1-785-232-8360

**Volunteers** must wear Class 2 ANSI vests at all times while in the roadway.

ALL APPLICANTS SHALL CONTACT A TRAFFIC CONTROL COMPANY FOR ALL TRAFFIC CONTROL DEVICES, **APPLICANT SHALL HAVE THE COMPANY CONTACT TRAFFIC ENGINEERING AT LEAST 3 DAYS PRIOR TO EVENT AND CONFIRM ORDER HAS BEEN PLACED.** IF YOU ARE SUPPLYING YOUR OWN BARRICADES YOU SHALL SEND THE NCHRP 350 OR MASH COMPLIANT CERTIFICATE TO CITY OF TOPEKA TRAFFIC ENGINEERING WITH A PHOTO OF THE DEVICES NO LATER THAN 10 DAYS PRIOR TO YOUR EVENT. **FAILURE TO ORDER OR USE UNAPPROVED TRAFFIC CONTROL WILL RESULT IN EVENT CANCELLATION.**





# Volunteer Info



**Volunteers are required to...**

- ~ Stay at their assigned closure.
- ~ Help emergency personnel or authorized vehicles through closures.
- ~ Wear a vest at all times while in the roadway.
- ~ Be at least 18 years old.
- ~ Set up and tear down traffic control.



## Race & Marathon Instructions



Volunteer wearing safety vest stands at the right edge of the road at each approach to the race route.

- \* As drivers stop, inform them of the race in progress.
- \* Request that they wait if there is not a gap in the race to allow them to cross the road.
- \* Request that drivers do not drive on the race route.

Place Cone + Sign in the center of the road at each approach to the race route.

